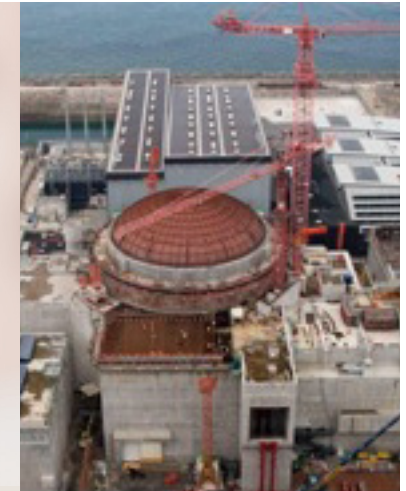




EDF

EPR

Flamanville (50)



NEEDS

- **Control the ventilation** of the reactor and related buildings.
(depressurization cascade system, absence of dead zones, air renewal rate)
- **Guarantee the representativeness** of sampling points.
(appropriateness of positioning of measurement channels, tubing retention rate calculations, etc.)
- **Validate the sealing** of buildings.

OUR ANSWER

- **Engineering** : studies, technical recommendations for architecture and layout of measuring systems.
- **Ventilation and radioprotection qualifications** : dispersion measurement and detection by generation of tracer gas.
- **Double expertise** : ventilation and radioprotection.

CUSTOMER BENEFITS

- **Reduction of study times by immediate taking into account of changes in input data.**
- **Guarantee of good representativeness of the radiological risk.**
- **Validation of the taking into account of all pollutants, whatever the stage of the process.**

5000h
of studies and calculations
120
deliverables
400
rooms surveyed
59
measurement channels